



Nexion



LITHIC



INDEX

WHO WE ARE	2-3
LITHIC COLLECTION	4-5
THE RANGE	6-11
SPACES	12-43
Pietra Piasentina	12-15
Vicenza Beige	16-19
Roccia Portoghese	20-23
Pannonia	24-27
Alpi Argento	28-29
Basalto Grigio	30-33
Gabbro Sfumato	34-37
Kilkenny Nero	38-43
TECHNICAL INFO	44

A NEW WAY
TO LOOK AT
SURFACES: AS
PARTS OF A
WHOLE, OF YOUR
SPACE, OF YOUR
OWN EXPERIENCE.

WHO WE ARE

ENVISIONING SURFACES AS A BLEND OF BEAUTY AND PERFORMANCE.

We are an Indo-Italian company who brought up **a new perspective on tile design**, for those who understand the role of **beauty as a well-being enabler in life**.

Our sintered surfaces, conceived as a unique blend of beauty and performance, are designed to suggest **a holistic vision of the space**.

Each surface is the result of the ability of our designers to connect with any source of inspiration and bring unique products to life, which **elevates the personality of a space**.

We operate differently, innovating in the way we see and do things. We stand by our customers throughout the journey, ensuring every surface reflects their vision and enhances designed space.

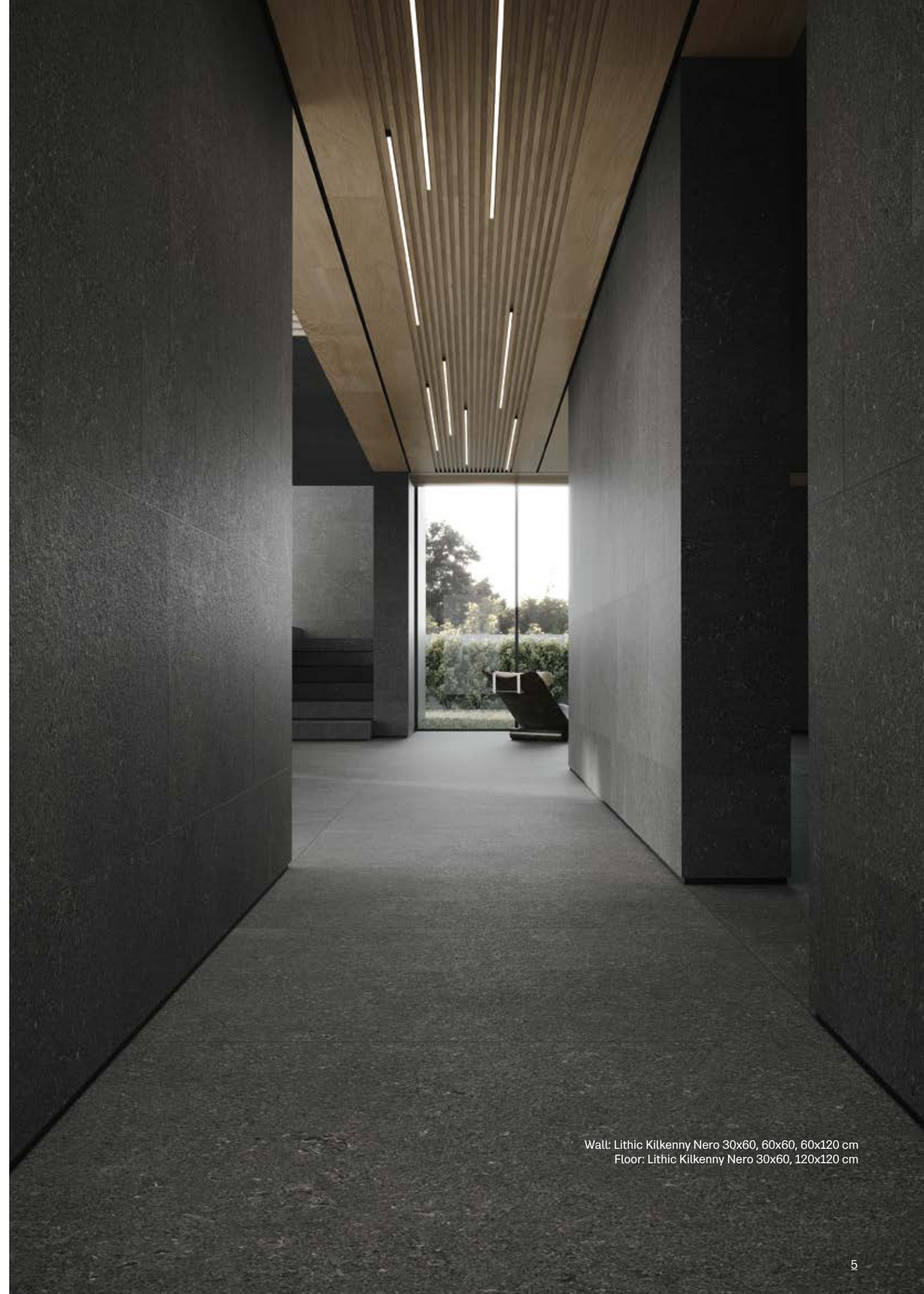
Our way is a new way to look at surfaces: as parts of a whole, of your space, of your own experience.

CRAFTING EXQUISITE STONE LOOK SURFACES

Introducing our **Lithic collection**, where we've reimagined the natural beauty of eight stones to create a harmonious chromatic spectrum. From pure whites to deep blacks, and encompassing warm beiges and cool greys, this collection embodies variety and completeness.

Aesthetically, our surfaces capture the vivid, warm, and realistic shades of natural stones, blending intricate details into designs that boast an originality unmatched in nature.

The **Absolute Matte** surface enhances the design of Nexion sintered stone, offering an unparalleled soft-touch experience without compromising on anti-slip and anti-reflective performance.



Wall: Lithic Kilkeny Nero 30x60, 60x60, 60x120 cm
Floor: Lithic Kilkeny Nero 30x60, 120x120 cm



THE RANGE

8 INSPIRATIONS 7 SIZES

The Lithic collection revisits the natural beauty of eight stones to create a harmonious chromatic spectrum, offering both the possibility of creating total look settings, and of combining the proposals with each other, or in combination with other design inspirations. The range of sizes consists of six variants, allowing the creation of multiple installation patterns in response to the most varied needs of contemporary architecture.



8 INSPIRATIONS

Covering a wide range of pure stone expressions.

7 SIZES (cm)

120x240/120x180/80x160/120x120/60x120/60x60/30x60

To exploit all architectural and creative potential.

1 SURFACE

Absolute Matte.



Pietra Piasentina



Vicenza Beige

Full body-colored porcelain stoneware (International standard)
Vitrified stoneware (Indian standard)
Rectified | 9 mm thickness



Roccia Portoghese



Pannonia

NEXION INSTALLATION SUGGESTIONS
Nexion recommends 2 mm joint for optimal aesthetics taking advantage of the tile’s caliber in multi-sized applications.
Both cement and epoxy grout can be used; grout-design color matching advisable for optimal aesthetics.
It is not recommended to use grouting with colored pigments in contrast with the color of the tiles.
For detailed installation guidelines log on www.nexiontiles.com

8 INSPIRATIONS

Covering a wide range of pure stone expressions.

1 SURFACE

Absolute Matte.

7 SIZES (cm)

120x240/120x180/80x160/120x120/60x120/60x60/30x60

To exploit all architectural and creative potential.



Alpi Argento



Basalto Grigio

Full body-colored porcelain stoneware (International standard)
Vitrified stoneware (Indian standard)
Rectified | 9 mm thickness



Gabbro Sfumato

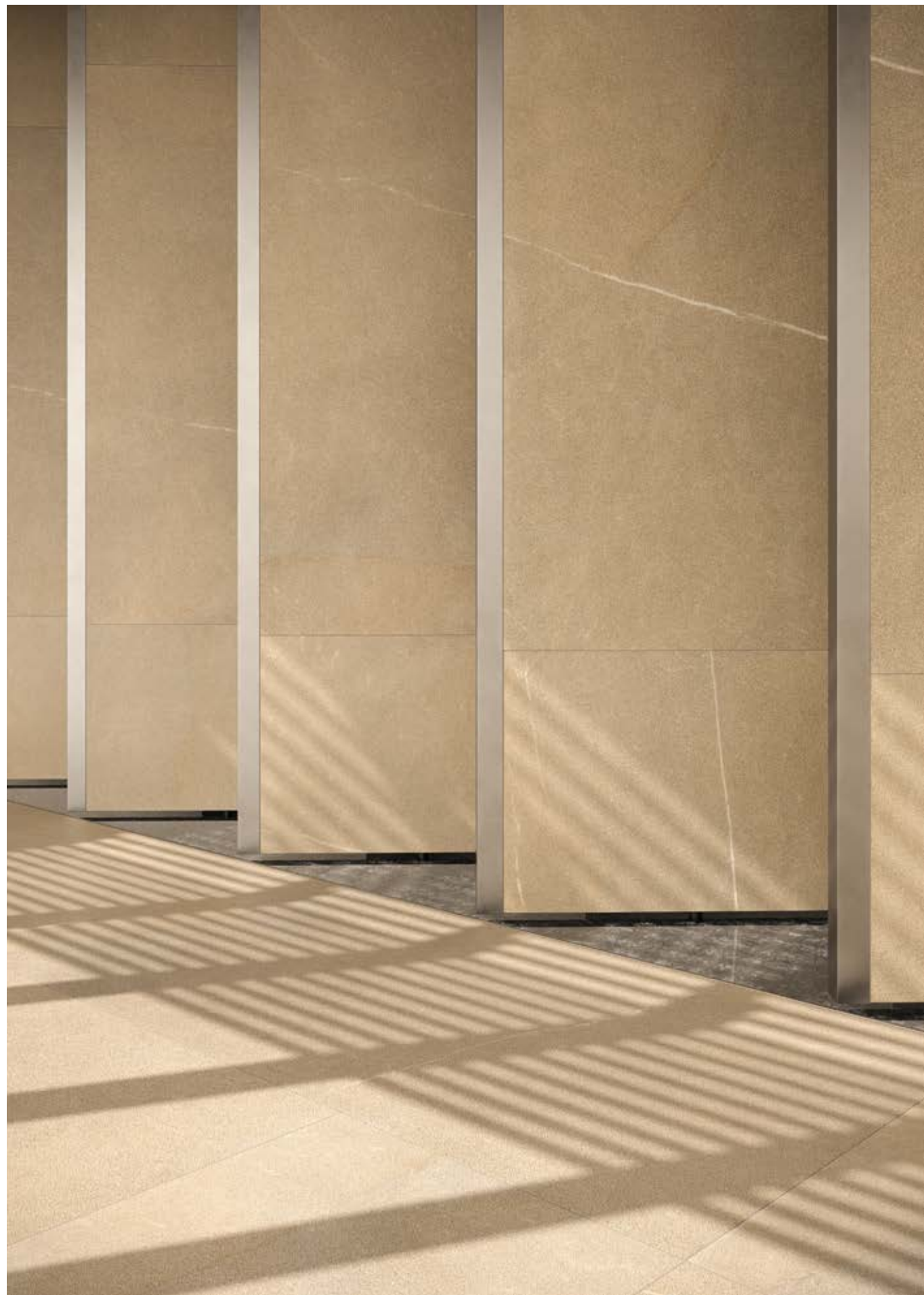


Kilkenny Nero

NEXION INSTALLATION SUGGESTIONS
Nexion recommends 2 mm joint for optimal aesthetics taking advantage of the tile's caliber in multi-sized applications.
Both cement and epoxy grout can be used; grout-design color matching advisable for optimal aesthetics.
It is not recommended to use grouting with colored pigments in contrast with the color of the tiles.
For detailed installation guidelines log on www.nexiontiles.com



Wall: Lithic Pietra Piacentina 120x240 cm
Floor: Lithic Pietra Piacentina 120x120 cm



Wall: Lithic Pietra Piasentina 120x240 cm
Floor: Lithic Pietra Piasentina 120x120 cm



Wall: Lithic Vicenza Beige 120x240 cm
Floor: Terraelino Calce 120x120 cm



Wall: Lithic Vicenza Beige 120x240 cm
Floor: Terraelino Calce 120x120 cm



Wall | Floor: Lithic Roccia Portoghese 120x240 cm



Wall | Floor: Lithic Roccia Portoghese 120x240 cm





Wall | Floor: Lithic Pannonia 120x240 cm
Desk: Calacatta Nero Lappato Matt 120x240 cm



Wall | Floor: Lithic Pannonia 120x240 cm
 Desk: Calacatta Nero Lappato Matt 120x240 cm





Wall | Floor | Furniture: Lithic Alpi Argento 120x120 cm





Wall: Lithic Basalto Grigio 120x240 cm
Floor: Lithic Basalto Grigio 120x120 cm
Reception desk: Lithic Gabbro Sfumato 120x240 cm

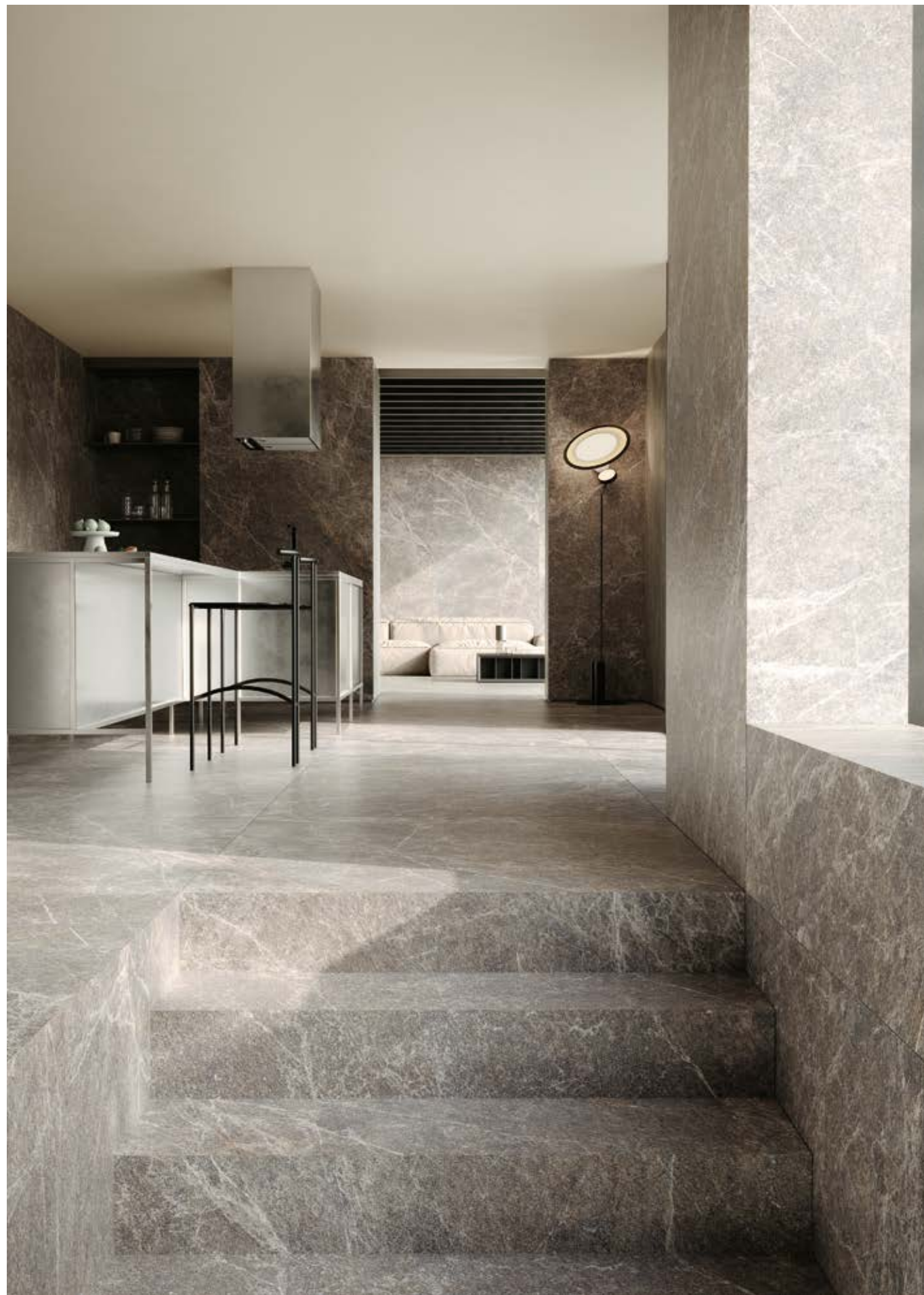


Wall: Lithic Basalto Grigio 120x240 cm
 Floor: Lithic Basalto Grigio 120x120 cm
 Reception desk: Lithic Gabbro Sfumato 120x240 cm

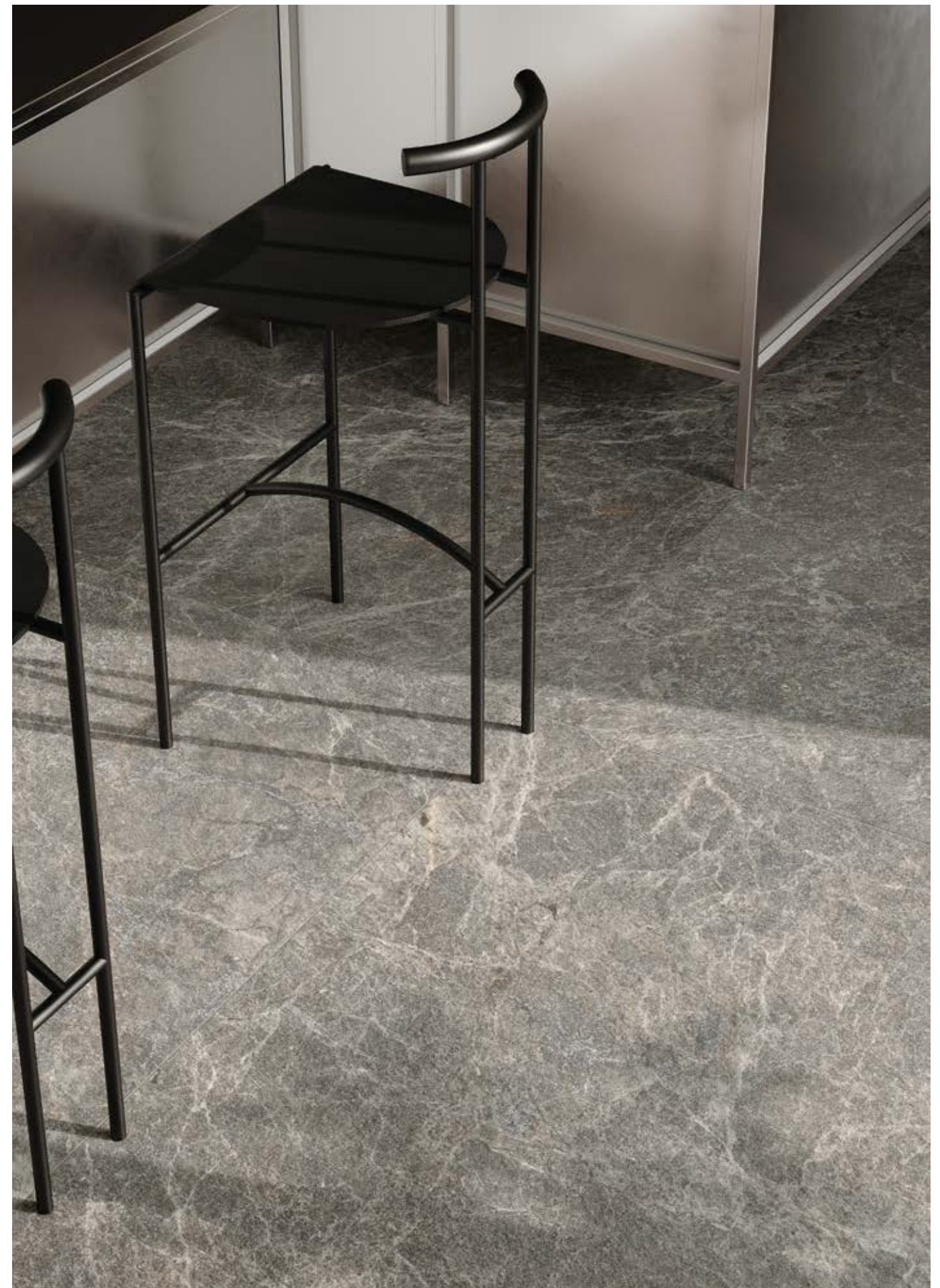




Wall: Lithic Gabbro Sfumato 120x240 cm
Floor: Lithic Gabbro Sfumato 120x120 cm



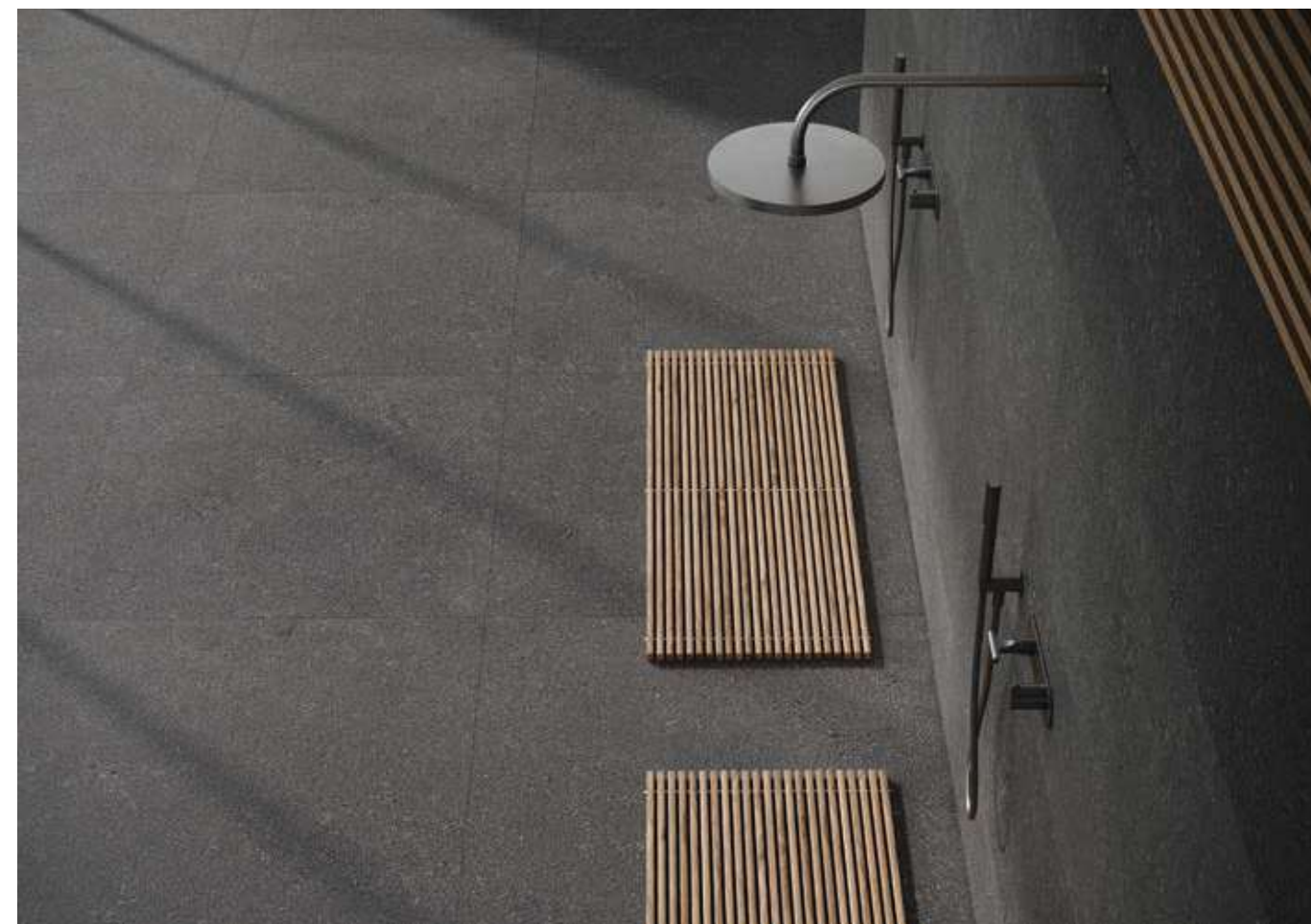
Wall: Lithic Gabbro Sfumato 120x240 cm
Floor: Lithic Gabbro Sfumato 120x120 cm



Floor: Lithic Gabbro Sfumato 120x120 cm



Wall: Lithic Kilkeny Nero 30x60, 60x60, 60x120 cm
Floor: Lithic Kilkeny Nero 30x60, 120x120 cm



Wall: Lithic Kilkenny Nero 30x60, 60x60, 60x120 cm
Floor: Lithic Kilkenny Nero, 120x120 cm



Wall: Lithic Kilkeny Nero 30x60, 60x60, 60x120 cm
Floor: Lithic Kilkeny Nero 30x60, 120x120 cm

NEXION QUALITY STANDARDS – All tests are carried out by Italian laboratories accredited according to ISO/IEC 17025:2017

Standards according to ISO 13006: Annex G - EN 14411: Annex G. Dry - Pressed Ceramic Tiles.

QUALITY ITEMS	TECHNICAL FEATURE	STANDARD METHOD ISO	UNIT	REQUIREMENTS ISO 13006:2018(E) E _v ≤0,5% GROUP BIa	NEXION Values			
					SIZE < 1200 mm		SIZE ≥ 1200 mm (SLABS)	
					%	mm	%	mm
DIMENSIONS AND SURFACE QUALITY	Width	ISO 10545 - 2	mm	± 0,3%	± 0,1%	± 0,8 mm	± 0,1%	± 1,0 mm
	Length	ISO 10545 - 2	mm	± 0,3%	± 0,1%	± 0,8 mm	± 0,1%	± 1,2 mm
	Thickness	ISO 10545 - 2	mm	± 5,0%	± 4,0%	± 0,5 mm	± 4,0%	± 0,5 mm
	Straightness of Side	ISO 10545 - 2	mm	± 0,3%	± 0,1%	± 0,8 mm	± 0,1%	± 1,0 mm
	Rectangularity	ISO 10545 - 2	mm	± 0,3%	± 0,1%	± 1,3 mm	± 0,1%	± 1,5 mm
	Surface Flatness	ISO 10545 - 2	mm	± 0,4%	± 0,1%	± 1,8 mm	± 0,2%	± 3,0 mm
	Surface Quality	ISO 10545 - 2	-	A minimum of 95% of the tiles are to be free from visible defects which can impair the appearance of a major area of tiles	95%			
PHYSICAL PROPERTIES	Water Absorption	ISO 10545 - 3	%	≤ 0,5%, Individual 0,6%	Avg. ≤ 0,08%, Individual 0,2%			
	Modulus of Rupture	ISO 10545 - 4	N/mm²	Min. 35, Individual Min. 32	Min. 42			
	Breaking Strength	ISO 10545 - 4	N	Not less than 1300	Min. 1800			
	Moisture Expansion	ISO 10545 - 10	mm/m	-	0,02			
	Surface Abrasion	ISO 10545 - 7	Class	Minimum Class II Report abrasion class and cycles passed	CLASS IV (> 2100 Cycles)			
	Resistance to surface abrasion of glazed tiles intended for use on floors							
	Mohs Hardness of surface	NA	-	-	7			
	Coefficient of linear thermal expansion from ambient temperature to 100 °C	ISO 10545 - 8	K ⁻¹	As declared by the Manufacturer	6x10 ⁻⁶ K ⁻¹ max			
	Thermal Shock Resistance	ISO 10545 - 9	-	As declared by the Manufacturer	No damage			
	Crazing Resistance: glazed tiles	ISO 10545 - 11	-	Required	No damage for Min. 10 Cycles			
	Bulk Density	ISO 10545 - 3	g/cc	2,2	2,2			
	Impact Resistance	ISO 10545 - 5	-	As declared by the Manufacturer	0,55			
	Frost Resistance	ISO 10545 - 12	-	As declared by the Manufacturer	No change			
	Slip Resistance	ANSI A137,1	-	As declared by the Manufacturer	DCOF > 0,41			
		DIN 51130	-		R-09			
CHEMICAL PROPERTIES	Small color differences	ISO 10545 - 16	-	Plain colored tiles only where required GL: ΔE < 0,75 UGL: ΔE < 1,0	No change			
	Resistance to staining	ISO 10545 - 14	Class	Minimum Class 3	Class 4			
	Resistance to household chemicals and swimming pool salts	ISO 10545 - 13	Class	Minimum B	Minimum A			
	Resistance to acids & alkalis	ISO 10545 - 13	Class	As declared by the Manufacturer	Minimum B			

PACKAGING INFO

Shipments to domestic markets (India)

Nominal Size cm	Thickness mm	Pcs. x box	Sq. mt x box	Weight x box (Kg)
120x240	9	1	2,87	61,00
120x180	9	2	4,31	91,00
80x160	9	2	2,55	54,00
120x120	9	2	2,87	60,00
60x120	9	2	1,43	30,00
60x60	9	4	1,43	31,00
30x60	9	6	1,07	23,00

Worldwide shipments

Nominal Size cm	Thickness mm	Pcs. x box	Sq. mt x box	Weight x box (Kg)	Box x pallet	Sq. mt x pallet	Pallet weight (Kg)
120x240	9	1	2,87	61,00	37	106,30	2347,00
120x180	9	2	4,31	91,00	25	107,70	2355,00
80x160	9	2	2,55	54,00	28	71,40	1542,00
120x120	9	2	2,87	60,00	24	68,88	1480,00
60x120	9	2	1,43	30,00	28	40,10	870,00
60x60	9	4	1,43	31,00	32	45,82	1012,00
30x60	9	6	1,07	23,00	44	46,99	1032,00

Tiles are packaged in a random manner and company cannot guarantee the type of faces inside each package.

Size

Nominal Size cm	Actual Size cm
120x240	119,8x239,8
120x180	119,8x179,8
80x160	79,8x159,8
120x120	119,8x119,8
60x120	59,8x119,8
60x60	59,8x59,8
30x60	29,8x59,8



Nexion

Design, Marketing & Global Sales | Via 2 Giugno, 13 | 41042 Fiorano Modenese | Modena (Italy) | globalcs@nexiontiles.com

Headquarters & Indian Sales | Nexion Surfaces Private Limited | 1104-1105, Shapath V, S.G. Highway, 380 015 | Ahmedabad, Gujarat (India) | indiancs@nexiontiles.com

nexiontiles.com